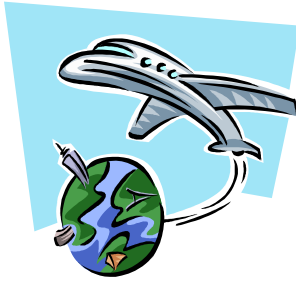


# The Nations



## Are coming to us!

Several hundred new international students will arrive in Columbus this August and September. After their period of study, many will return home with their perspectives and world views shaped by the experiences they have had during their stay in the United States, and they in turn, will influence others. Will they have a chance to know the love of Christ while they are here? Will you allow God to use you? **Come to a training at UALC, 3500 Mill Run Dr, Hilliard, on Mon., Aug. 2nd , 7-9 p.m.** Sign up on line or use tear off below.

Phone: 614-294-2434 E-mail: [recruit@ifipartners.org](mailto:recruit@ifipartners.org)

Application and Training sign up at: [www.ifipartners.org](http://www.ifipartners.org)

*Please detach. Keep top half as a reminder. You will receive further information.*

Yes! I plan to attend the training on Aug. 2nd!

- I am a new volunteer. Please send me an application.       I have already volunteered with IFI. Please sign me up for this year.

- Airport Pickup  
 Temporary Housing  
 Conversation Partner  
 ESL Teacher/Assistant  
 Garage Sale (9/18)  
 Grocery store (Sat. morn)  
 Friendship Partner  
 Welcome Potluck (9/12)  
 Ice Cream Social (9/15)  
 Serve with my Small Group
- Name \_\_\_\_\_  
 Address \_\_\_\_\_  
 City \_\_\_\_\_ Zip \_\_\_\_\_  
 Day Phone \_\_\_\_\_ Evening Phone \_\_\_\_\_  
 Email \_\_\_\_\_  
 Church \_\_\_\_\_

*Please put in offering plate or mail to:  
 IFI, 195 Chittenden Ave., Columbus, OH 43201*

# The Nations



## Are coming to us!

Several hundred new international students will arrive in Columbus this August and September. After their period of study, many will return home with their perspectives and world views shaped by the experiences they have had during their stay in the United States, and they in turn, will influence others. Will they have a chance to know the love of Christ while they are here? Will you allow God to use you? **Come to a training at UALC, 3500 Mill Run Dr, Hilliard, on Mon., Aug. 2nd , 7-9 p.m.** Sign up on line or use tear off below.

Phone: 614-294-2434 E-mail: [recruit@ifipartners.org](mailto:recruit@ifipartners.org)

Application and Training sign up at: [www.ifipartners.org](http://www.ifipartners.org)

*Please detach. Keep top half as a reminder. You will receive further information.*

Yes! I plan to attend the training on Aug. 5th!

- I am a new volunteer. Please send me an application.       I have already volunteered with IFI. Please sign me up for this year.

- Airport Pickup  
 Temporary Housing  
 Conversation Partner  
 ESL Teacher/Assistant  
 Garage Sale (9/18)  
 Grocery Store (Sat. morn)  
 Friendship Partner  
 Welcome Potluck (9/12)  
 Ice Cream Social (9/15)  
 Serve with My Small Group
- Name \_\_\_\_\_  
 Address \_\_\_\_\_  
 City \_\_\_\_\_ Zip \_\_\_\_\_  
 Day Phone \_\_\_\_\_ Evening Phone \_\_\_\_\_  
 Email \_\_\_\_\_  
 Church \_\_\_\_\_

*Please put in offering plate or mail to:  
 IFI, 195 Chittenden Ave., Columbus, OH 43201*

**Airport Pickup\*:** Meet a student at the airport and transport them to housing, out for a meal, or to the OSU campus. If you are able to spend more time, you may take the student around to offices on the campus before dropping them to their housing.

**Temporary Housing\*:** Provide a place for a student to stay for 2-5 days until he is able to arrange permanent housing. You may assist him/her in looking for an apartment, but this is not required. It is necessary for you to get the student to campus each day.

**Conversational English Partner\*:** Meet with a student one hour per week for at least 3 months to practice spoken English and develop a friendship. Students available year round.

**ESL (English as a Second Language) Class Assistant\*:** Assist and/or teach prepared lessons to international students taking our ESL class. Classes meet weekly beginning in late September.

**Friendship Partner\*:** You/your family meets monthly with a student for a meal or to do an activity together. New students signing up in September. Minimum 6-month commitment.

**Grocery Shopping Trips on Saturday mornings in early October\*:** Drivers and students meet at designated location and then go grocery shopping together.

**Garage Sale Shopping Service\*:** Individuals and churches needed to host garage sale, recruit delivery people, and drivers on this date. Drivers needed to take a carload of students around to garage sales. **Saturday, September 18 (8:00 a.m. – 12:00 noon.)** We are in need of trucks and movers to help transport items.  
**Delivery: 12 noon to 5:00 p.m.**

**Welcome Potluck (Sunday, September 12):** Bring food for yourself and 8-10 internationals, a friendly smile, and a heart to enjoy interaction with the new international students and their families. This is a family activity – children are welcome and some activities will be provided. It will be from **5 p.m.-9 p.m.** at the Agricultural Auditorium on the OSU campus. **We need individuals and 4-5 church groups to help set up, serve food and clean up. Contact Leila at: [recruit@ifipartners.org](mailto:recruit@ifipartners.org) or 294-2434.**

**Ice Cream Social (Wednesday, September 15 from 7 p.m.-9 p.m.):** Individuals and small groups to help with set up, serving ice cream, greeting students, and clean up.

**Serve as Culinary Missionary with my small group:** Bring your Sunday School class, small group, missions committee, or a group of friends! Help our Bible study team by providing a meal for one of our Friday night Bible study groups. This can be a one time service or can be repeated. \*Or group can host a monthly Conversation, Culture, and Cuisine gathering with internationals. Minimum 3 months. Contact us to set up a date! Also see other group opportunities above.

\*Application and training required for first time volunteers.

**Airport Pickup\*:** Meet a student at the airport and transport them to housing, out for a meal, or to the OSU campus. If you are able to spend more time, you may take the student around to offices on the campus before dropping them to their housing.

**Temporary Housing\*:** Provide a place for a student to stay for 2-5 days until he is able to arrange permanent housing. You may assist him/her in looking for an apartment, but this is not required. It is necessary for you to get the student to campus each day.

**Conversational English Partner\*:** Meet with a student one hour per week for at least 3 months to practice spoken English and develop a friendship. Students available year round.

**ESL (English as a Second Language) Class Assistant\*:** Assist and/or teach prepared lessons to international students taking our ESL class. Classes meet weekly beginning in late September.

**Friendship Partner\*:** You/your family meets monthly with a student for a meal or to do an activity together. New students signing up in September. Minimum 6-month commitment.

**Grocery Shopping Trips on Saturday mornings in early October\*:** Drivers and students meet at designated location and then go grocery shopping together.

**Garage Sale Shopping Service\*:** Individuals and churches needed to host garage sale, recruit delivery people, and drivers on this date. Drivers needed to take a carload of students around to garage sales. **Saturday, September 18 (8:00 a.m. – 12:00 noon.)** We are in need of trucks and movers to help transport items.  
**Delivery: 12 noon to 5:00 p.m.**

**Welcome Potluck (Sunday, September 12):** Bring food for yourself and 8-10 internationals, a friendly smile, and a heart to enjoy interaction with the new international students and their families. This is a family activity – children are welcome and some activities will be provided. It will be from **5 pm.-9 p.m.** Agricultural Auditorium on the OSU campus. **We need individuals and 4-5 church groups to help set up, serve food and clean up. Contact Leila at: [recruit@ifipartners.org](mailto:recruit@ifipartners.org) or 294-2434.**

**Ice Cream Social (Wednesday, September 15 from 7 p.m.-9 p.m.):** Individuals and small groups to help with set up, serving ice cream, greeting students, and clean up.

**Serve as Culinary Missionary with my small group:** Bring your Sunday School class, small group, missions committee, or a group of friends! Help our Bible study team by providing a meal for one of our Friday night Bible study groups. This can be a one time service or can be repeated. \*Or group can host a monthly Conversation, Culture, and Cuisine gathering with internationals. Minimum 3 months. Contact us to set up a date! Also, see other group activities above.

\*Application and training required for first time volunteers.